

THE SUNCADIA® COLLECTION

TRAILSIDEHOMES™

Alpental
Mountain plan

siding configuration | Horizontal lap, stone accent, garage/living

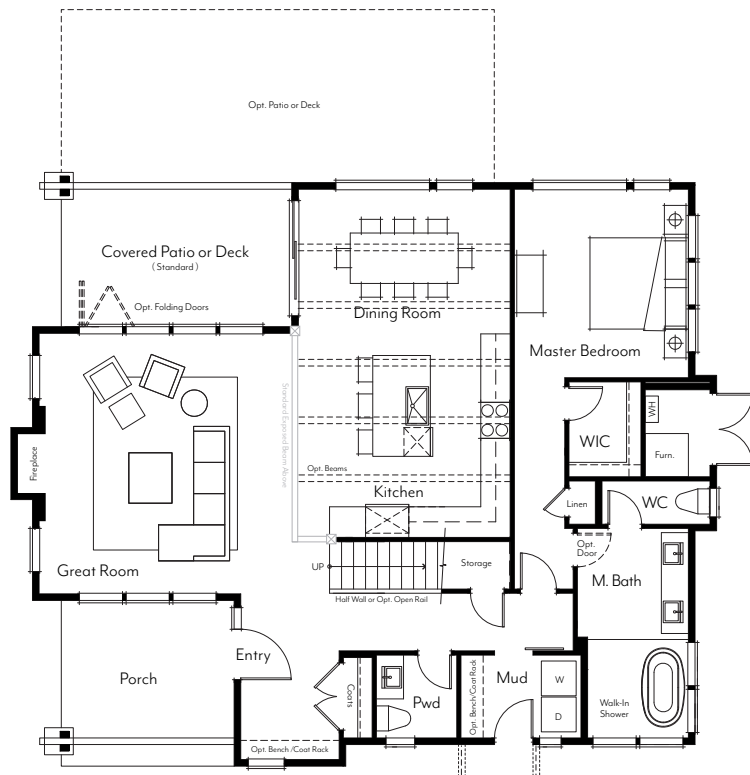


Plans and elevations are artist's renderings only, may not accurately represent the actual condition of a home as constructed, and may contain options which are not standard on all models. We reserve the right to make changes to these floor plans, specifications, dimensions, designs and elevations without prior notice. Stated dimensions and square footage are estimated and should not be used as representation of the home's actual size.

316 West First Street, Cle Elum, WA 98922

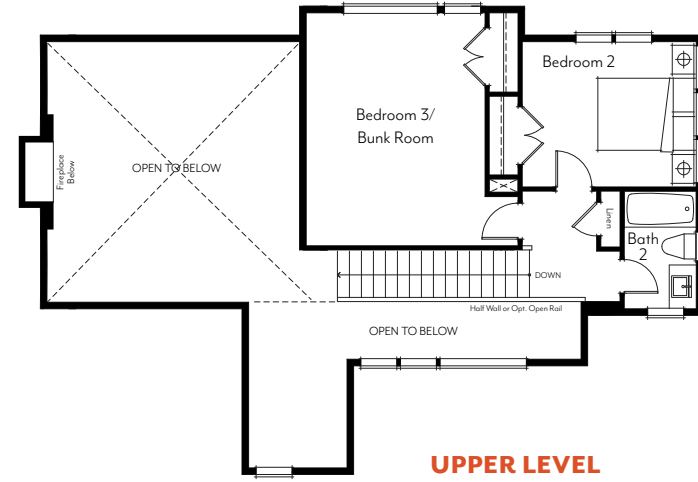
(206) 620-0920

SuncadiaCollection.com



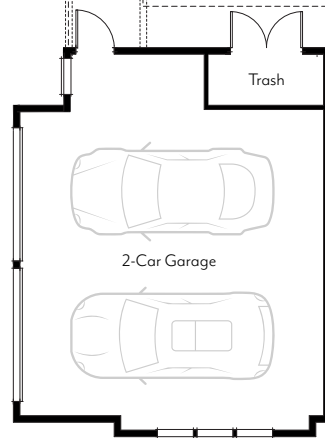
MAIN LEVEL

1 Bedroom
 1.5 Baths
 Covered Entry
 Covered Rear Patio



UPPER LEVEL

2 Bedrooms
 1 Bath

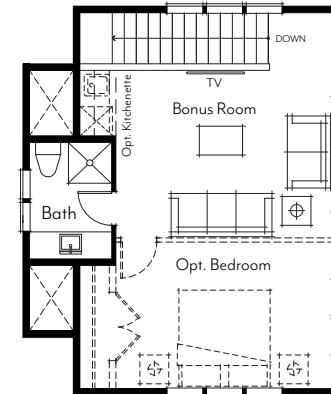


GARAGE

Trash Enclosure
 Opt. Breezeway & Sidewalk

OPT. GARAGE WITH LIVING ABOVE

Standard 3/4 Bath
 Optional Kitchenette
 & Bedroom



Alpentel Plan Highlights :

- 2,004 to 2,543 livable square feet plus garage
- 3 to 4 bedrooms
- 2-1/2 to 3-1/2 bathrooms
- Soaring walls of glass in great room
- Convenient main floor master
- Gourmet kitchen options
- Optional living space above garage
- Oversized 2-car garage

Minor differences exist between the Mountain and Contemporary floorplans. Please see Trilside representative for specific details.

updated: 02.01.18



Plans and elevations are artist's renderings only, may not accurately represent the actual condition of a home as constructed, and may contain options which are not standard on all models. We reserve the right to make changes to these floor plans, specifications, dimensions, designs and elevations without prior notice. Stated dimensions and square footage are estimated and should not be used as representation of the home's actual size.

316 West First Street, Cle Elum, WA 98922

(206) 620-0920

SuncadiaCollection.com