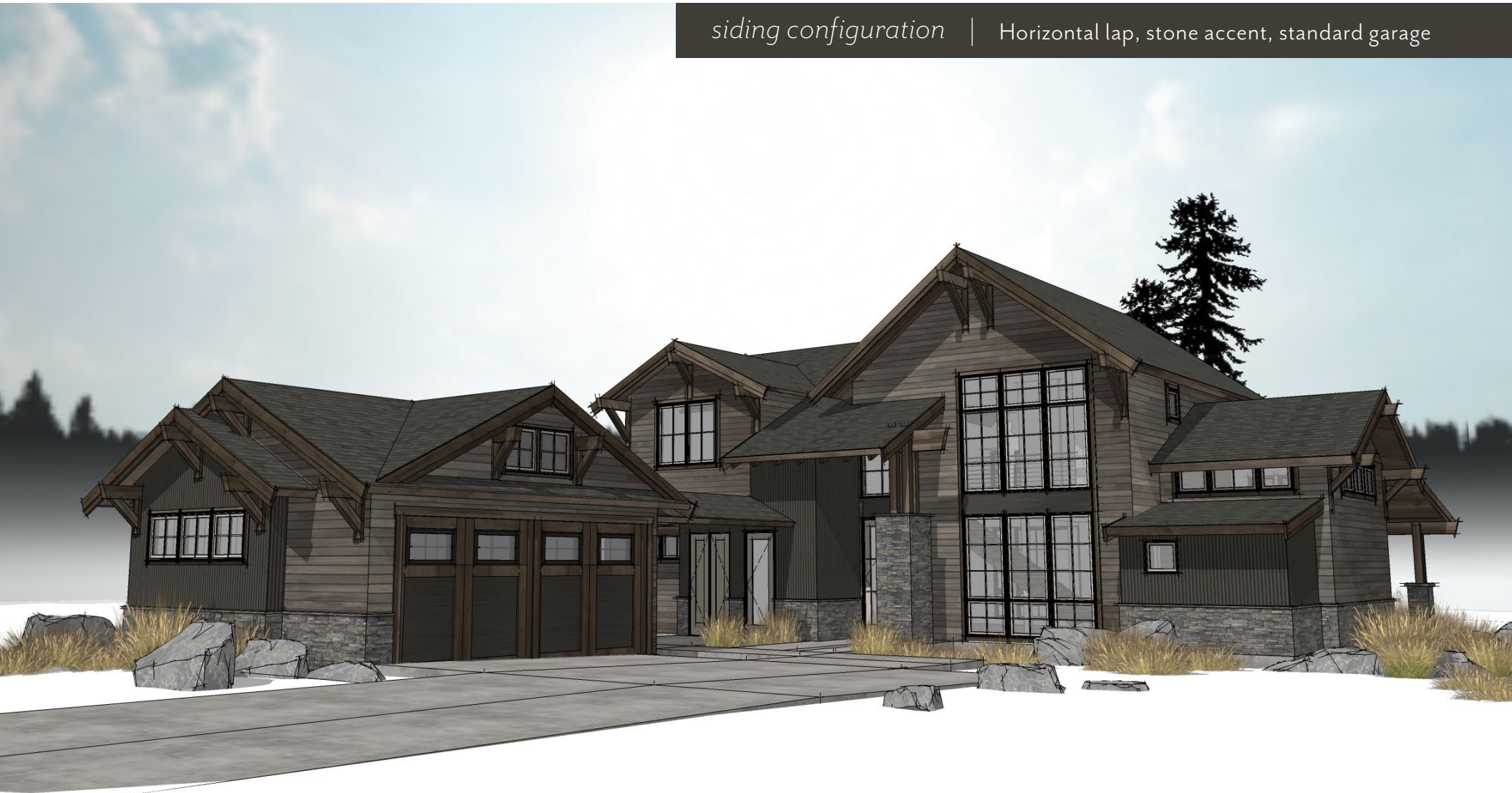


THE SUNCADIA® COLLECTION

TRAILSIDEHOMES™

Backcountry
Mountain plan

siding configuration | Horizontal lap, stone accent, standard garage

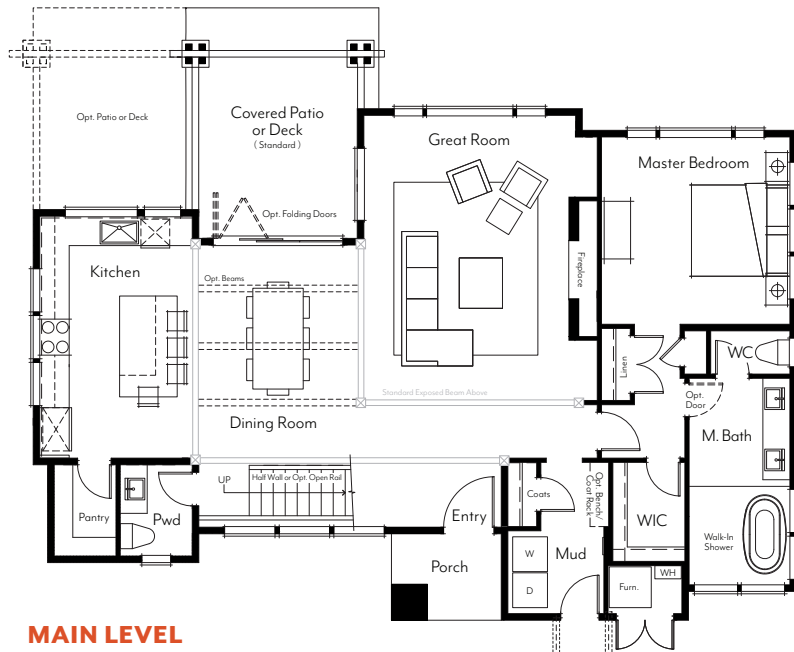


Plans and elevations are artist's renderings only, may not accurately represent the actual condition of a home as constructed, and may contain options which are not standard on all models. We reserve the right to make changes to these floor plans, specifications, dimensions, designs and elevations without prior notice. Stated dimensions and square footage are estimated and should not be used as representation of the home's actual size.

316 West First Street, Cle Elum, WA 98922

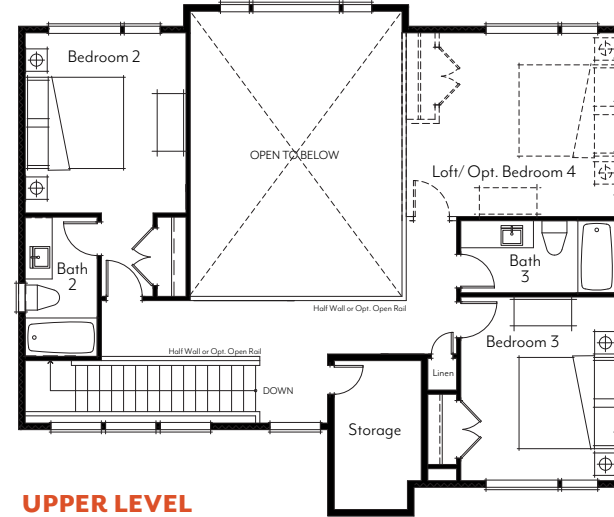
(206) 620-0920

SuncadiaCollection.com



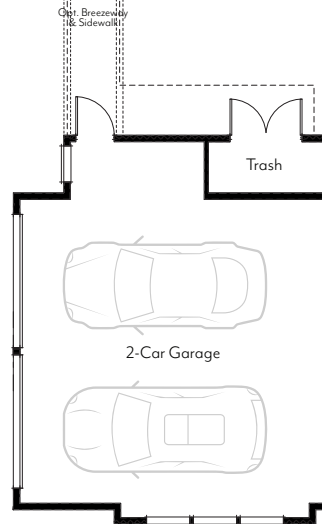
MAIN LEVEL

- 1 Bedroom
- 1.5 Baths
- Covered Entry
- Covered Rear Patio



UPPER LEVEL

- 2-3 Bedrooms
- Loft/Opt. Additional Bedroom
- 2 Baths

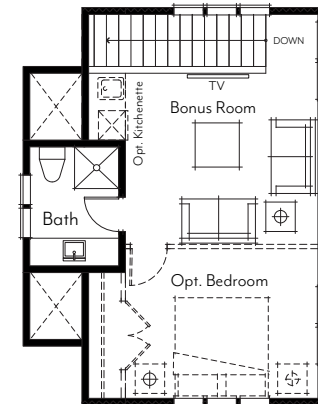


GARAGE

- Trash Enclosure
- Opt. Breezeway & Sidewalk

OPT. GARAGE WITH LIVING ABOVE

- Standard 3/4 Bath
- Optional Kitchenette & Bedroom



Backcountry Plan Highlights :

- 2,332 to 2,831 square feet plus garage
- 3 to 5 bedrooms
- Loft and rec room options available
- 3-1/2 to 4-1/2 bathrooms
- Floating stair option to 2nd floor bedrooms and loft area
- Convenient main floor master
- Gourmet kitchen options
- Optional living space above garage
- Oversized 2-car garage

Minor differences exist between the Mountain and Contemporary floorplans. Please see Trilside representative for specific details.

updated: 02.01.18



Plans and elevations are artist's renderings only, may not accurately represent the actual condition of a home as constructed, and may contain options which are not standard on all models. We reserve the right to make changes to these floor plans, specifications, dimensions, designs and elevations without prior notice. Stated dimensions and square footage are estimated and should not be used as representation of the home's actual size.

316 West First Street, Cle Elum, WA 98922

(206) 620-0920

SuncadiaCollection.com