

THE SUNCADIA® COLLECTION

TRAILSIDEHOMES™

Cascade

Contemporary plan

siding configuration | Horizontal lap, B&B accent, standard garage

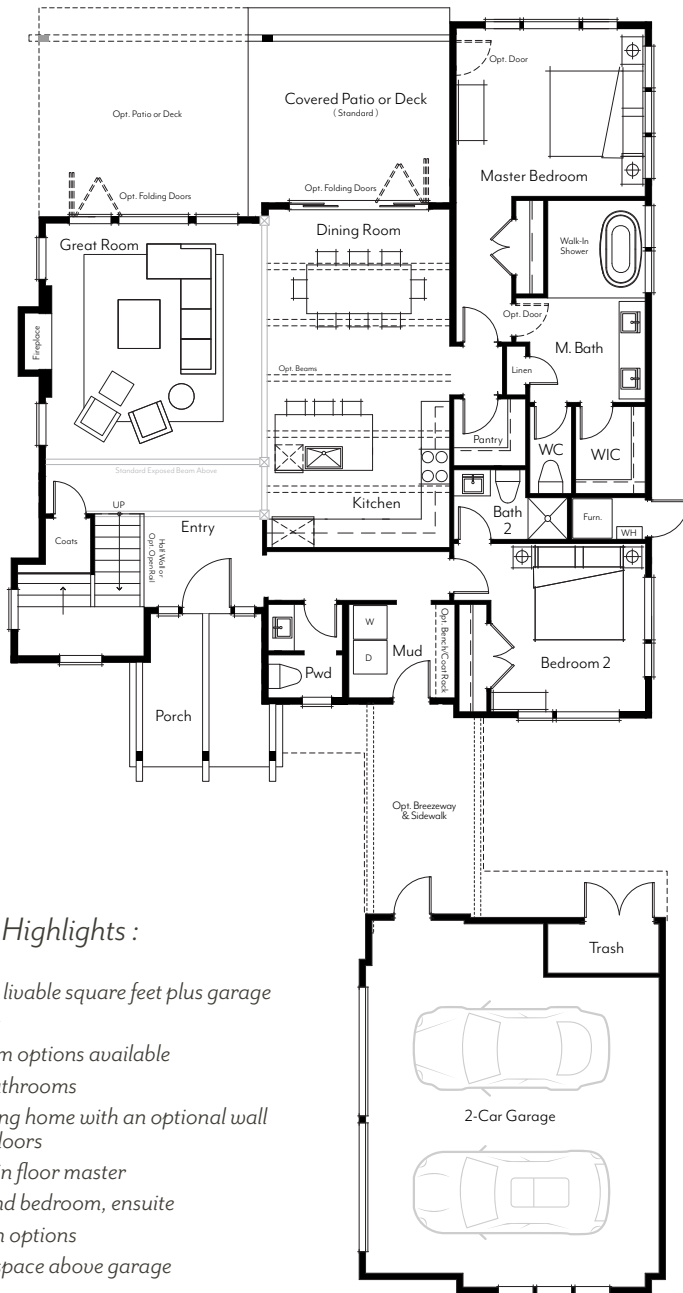


Plans and elevations are artist's renderings only, may not accurately represent the actual condition of a home as constructed, and may contain options which are not standard on all models. We reserve the right to make changes to these floor plans, specifications, dimensions, designs and elevations without prior notice. Stated dimensions and square footage are estimated and should not be used as representation of the home's actual size.

316 West First Street, Cle Elum, WA 98922

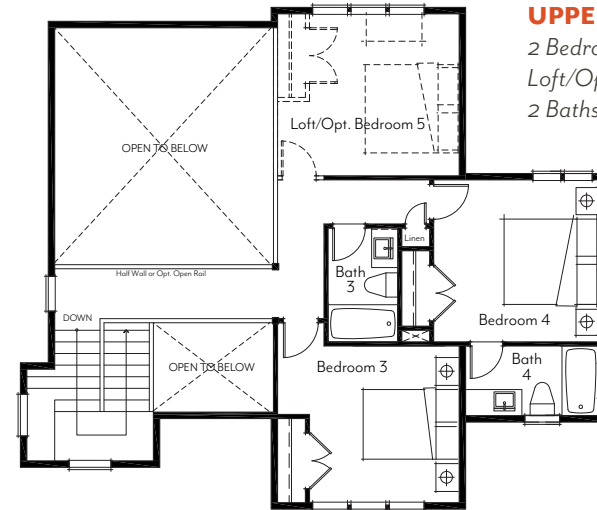
(206) 620-0920

SuncadiaCollection.com



MAIN LEVEL

2 Bedrooms
2.5 Baths
Covered Entry
Covered Rear Patio



UPPER LEVEL

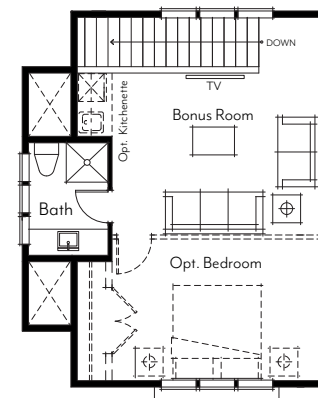
2 Bedrooms
Loft/Opt. Additional Bedroom
2 Baths

Cascade Plan Highlights :

- 2,453 to 3,000 livable square feet plus garage
- 4 to 6 bedrooms
- Loft and rec room options available
- 4-1/2 to 5-1/2 bathrooms
- Great entertaining home with an optional wall of folding glass doors
- Convenient main floor master
- Main floor second bedroom, ensuite
- Gourmet kitchen options
- Optional living space above garage
- Oversized 2-car garage

OPT. GARAGE WITH LIVING ABOVE

Standard 3/4 Bath
Optional Kitchenette
& Bedroom



GARAGE

Trash Enclosure
Opt. Breezeway & Sidewalk

Minor differences exist between the Mountain and Contemporary floorplans. Please see Trailside representative for specific details.

updated: 02.01.18



Plans and elevations are artist's renderings only, may not accurately represent the actual condition of a home as constructed, and may contain options which are not standard on all models. We reserve the right to make changes to these floor plans, specifications, dimensions, designs and elevations without prior notice. Stated dimensions and square footage are estimated and should not be used as representation of the home's actual size.

316 West First Street, Cle Elum, WA 98922

(206) 620-0920

SuncadiaCollection.com