

THE SUNCADIA® COLLECTION

TRAILSIDEHOMES™

DeRoux

Mountain plan

siding configuration | Horizontal lap, metal accent, standard garage

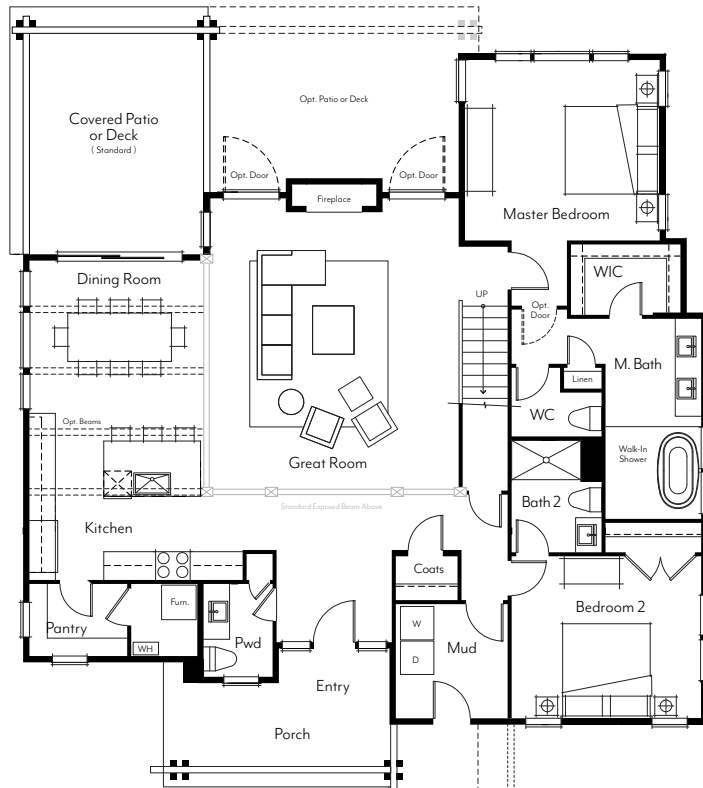


Plans and elevations are artist's renderings only, may not accurately represent the actual condition of a home as constructed, and may contain options which are not standard on all models. We reserve the right to make changes to these floor plans, specifications, dimensions, designs and elevations without prior notice. Stated dimensions and square footage are estimated and should not be used as representation of the home's actual size.

316 West First Street, Cle Elum, WA 98922

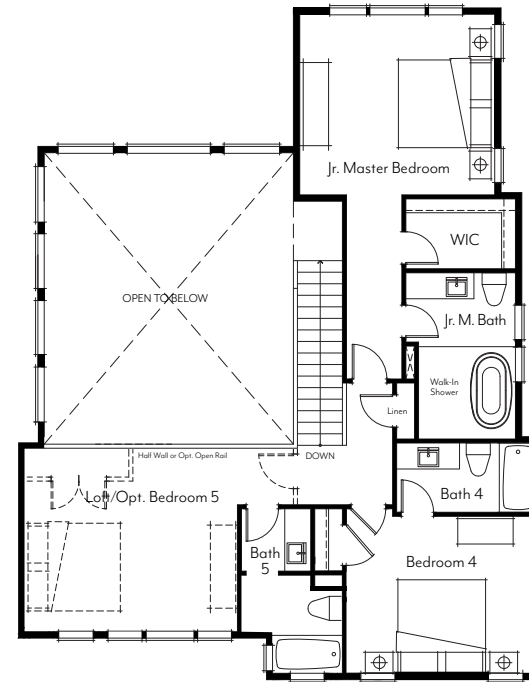
(206) 620-0920

SuncadiaCollection.com



MAIN LEVEL

2 Bedrooms
 2.5 Baths
 Covered Entry
 Covered Rear Patio

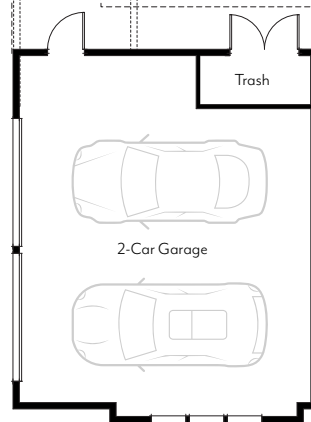


UPPER LEVEL

2 Bedrooms
 Loft/Opt. Additional Bedroom
 3 Baths

DeRoux Plan Highlights :

- 2,850 to 3,429 livable square feet plus garage
- 4 to 6 bedrooms
- Loft and rec room options available
- 5-1/2 to 6-1/2 bathrooms
- Grand entertaining area with a lodge style fireplace
- Convenient main floor master
- Junior master suite
- Gourmet kitchen options
- Optional living space above garage
- Oversized 2-car garage

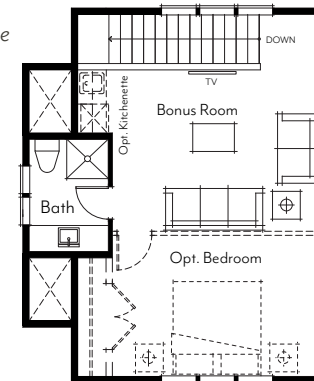


GARAGE

Trash Enclosure
 Opt. Breezeway & Sidewalk

OPT. GARAGE WITH LIVING ABOVE

Standard 3/4 Bath
 Optional Kitchenette
 & Bedroom



Minor differences exist between the Mountain and Contemporary floorplans. Please see Trilside representative for specific details.

updated: 02.01.18



Plans and elevations are artist's renderings only, may not accurately represent the actual condition of a home as constructed, and may contain options which are not standard on all models. We reserve the right to make changes to these floor plans, specifications, dimensions, designs and elevations without prior notice. Stated dimensions and square footage are estimated and should not be used as representation of the home's actual size.

316 West First Street, Cle Elum, WA 98922

(206) 620-0920

SuncadiaCollection.com